



# BETAMARK

PROFESSIONAL AUDIO EQUIPMENTS



PRODUCT CATALOGUE  
2025





# BETAMARK

PROFESSIONAL AUDIO

## HIGH POWER AMPLIFIER

### MT Series



**MT 12000**  
6000w + 6000w @ 2 Ohms



**MT 10000**  
5000w + 5000w @ 2 Ohms



**MT 7000**  
3500w + 3500w @ 2 Ohms



**MT 6000**  
3000w + 3000w @ 2 Ohms

#### MT 12000 & MT 10000

- > High Efficiency Class TD Power Modules
- > FOUR FANS & Copper Transformer for Best Performance.
- > Most Stable BASS Amplifier in INDIA
- > Gain Control, Peak Limiter, Low Distortion & Overheat Protection with Short Circuit Protection.
- > Speaker Recommended MT10000 - PD183000, PD213500C  
MT12000 - PD21 3500C.
- > Recommended for **SUB WOOFER ONLY ( 18" , 21" & 24" )**

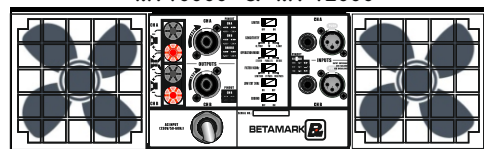
#### MT 7000 & MT 6000

- > High Efficiency Class H Power Modules.
- > Advanced Copper Toroidal Transformer with Heat Protect.
- > Peak Limiter, Low Distortion & Limiter with DC Protect.
- > Short Circuit Protect, Overload Protect, Temp. Protect etc.
- > Speaker Recommended MT6000 - 18F451, C18650EL, 2242  
MT7000 - PD183000, 18SW3000, PD1882
- > Suitable For Top, Bass and Sub-woofer.

MODEL NO.	MT 12000	MT 10000	MT 7000	MT 6000
2Ω STEREO	6000 X 2	5000 X 2	3500 X 2	3000 X 2
4Ω STEREO	4800 X 2	4000 X 2	2750 X 2	2250 X 2
8Ω STEREO	3000 X 2	2500 X 2	1850 X 2	1650 X 2
4Ω BRIDGE	—	—	6800w	5800w
8Ω BRIDGE	9000w	7500w	5500w	4500w
DAMPING FACTOR	>2000	>2000	>1200	>1000
CLASS	TD	TD	H	H
WEIGHT (KG)	45	40	47	41



MT10000 & MT 12000



MT 7000 & MT 6000



# BETAMARK

PROFESSIONAL AUDIO

POWER AMPLIFIER

## AX Series

AX 6050 AX 4050 AX 3050

**4 FANS**  
ADVANCED COOLING

**DOUBLE**  
CROSSOVER



### AX 6050

3300w + 3300w @ 2 Ohms

### AX 4050

2200w + 2200w @ 2 Ohms

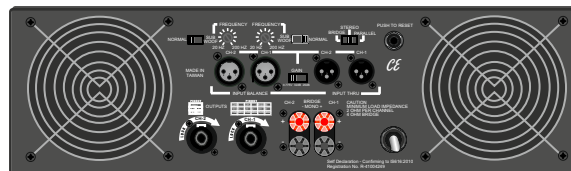
### AX 3050

1700w + 1700w @ 2 Ohms

## INDIA'S FAVOURITE AMPLIFIER

- > High Efficiency Class H Power Modules
- > FOUR FANS For Faster Cooling
- > Stable at 2 ohms
- > DOUBLE CROSSOVER for Bass and Top Selection.
- > SUBWOOFER knob select crossover frequency
- > Protections: output current limiting, thermal protection, DC offset protection & circuit breaker
- > Indicators: Signal: -20dB, -10dB, -5dB, Clip, Protect & Signal
- > High Pass Filter (HPF): On/Off switch for each channel

- > Advanced Copper Toroidal Transformer
- > Input Peak Limiter, Low Distortion & Overheat Protection
- > Limiter: On/Off switch for each channel
- > Stereo/Bridge/Parallel/Crossover Modes
- > Use for LIVE Reinforcement System, DJ & Installations



MODEL NO.	AX 6050	AX 4050	AX 3050
2Ω STEREO	3400 X 2	2250 X 2	1600 X 2
4Ω STEREO	2600 X 2	1600 X 2	1300 X 2
8Ω STEREO	1800 X 2	1100 X 2	800 X 2
4Ω BRIDGE	6600w	4400w	3200w
8Ω BRIDGE	4900w	3000w	2200w
DAMPING FACTOR	>880	>700	>700
CLASS	H	H	H
WEIGHT (KG)	34	31	28

#### Specifications:

- Input Sensitivity (4 Ohms, 1 kHz): 4dB
- Input Impedance: 30k Ohms Balanced / 15k Ohms Unbalanced
- Input CMRR (1kHz): >60dB
- Slew Rate (8 Ohms): 40 V/msec
- Frequency Response (±0.5dB): 20Hz - 20kHz
- T.H.D. (1 kHz, rated power): <0.03%
- Signal to noise ratio: >100dB
- Channel separation: >80dB
- Power source: AC 100-240V, 50/60Hz

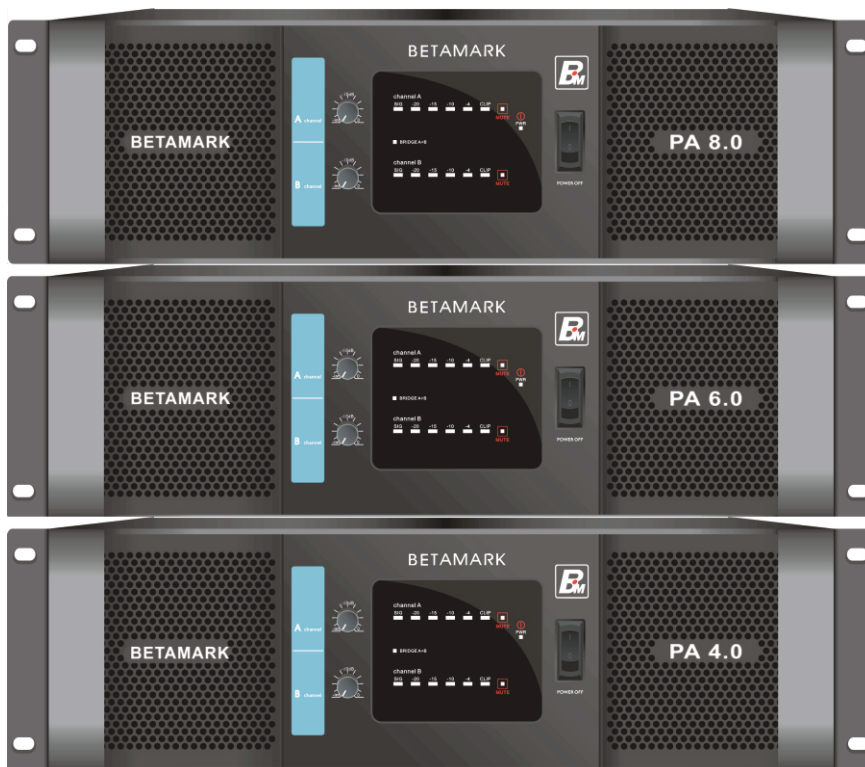


# BETAMARK

PROFESSIONAL AUDIO

POWER AMPLIFIER

## PA Series



### PA 8.0

4000w + 4000w @ 2 Ohms

### PA 6.0

3000w + 3000w @ 2 Ohms

### PA 4.0

2000w + 2000w @ 2 Ohms

MODEL NO.	PA 8.0	PA 6.0	PA 4.0
2Ω STEREO	4000 X 2	3000 X 2	2000 X 2
4Ω STEREO	3000 X 2	2250 X 2	1500 X 2
8Ω STEREO	2000 X 2	1500 X 2	1000 X 2
4Ω BRIDGE	8000w	5800w	3400w
8Ω BRIDGE	6000w	4000w	2500w
DAMPING FACTOR	>1200	>900	>700
CLASS	H	H	H
WEIGHT (KG)	45	43	38

- > High Efficiency Class H Circuit.
- > FOUR FANS For Faster Cooling
- > Copper Toroidal Transformer
- > DOUBLE CROSSOVER for Bass and Top Selection.
- > Input Peak Limiter, Low Distortion & Overheat Protection
- > Stereo/Bridge/Parallel/Crossover Modes
- > Use for LIVE Reinforcement System, DJ & Installations



## RMX Series



### RMX 4000

1600w + 1600w @ 2 Ohms

### RMX 3000

1300w + 1300w @ 2 Ohms

MODEL NO.	RMX 4000	RMX 3000
2Ω STEREO	1600 X 2	1300 X 2
4Ω STEREO	1200 X 2	950 X 2
8Ω STEREO	800 X 2	650 X 2
4Ω BRIDGE	3200w	2600w
8Ω BRIDGE	2400w	1900w
DAMPING FACTOR	>400	>400
CLASS	AB	AB
WEIGHT (KG)	28	24

- > High Efficiency Class AB Power Modules
- > Hi-Pass, Low Pass & Bypass Crossover.
- > Copper Toroidal Transformer
- > Stereo/Bridge/Parallel/Crossover Modes
- > Input Peak Limiter, Low Distortion & Overheat Protection
- > Best for LINE ARRAYS (10" & 12") & HF Drivers
- > Suitable for LIVE Reinforcement, DJ & Installations





# BETAMARK

PROFESSIONAL AUDIO

## 2U DIGITAL POWER AMPLIFIER

### HP Series

HP8004



**4 x High Speed Fans**

**1 x Digital Display** (Fan Speed, Temp., Volume & Protection)

MODEL NO.	HP 8004	DT 8204
4Ω STEREO	2000 x 4	1800 x 4
8Ω STEREO	1400 x 4	1200 x 4
8Ω BRIDGE	4000w x 2	3600w x 2
DAMPING FACTOR	>500	>500
CLASS	H	H
WEIGHT (KG)	30	32
TRANSFORMER	1	2
CHANNEL MODULE	2	4
S/N ratio	>105 dB	>105 dB
FREQUENCY RESPONSE	20-20K Hz +-2dB	

### DT Series

DT8204



**2 x Transformer**

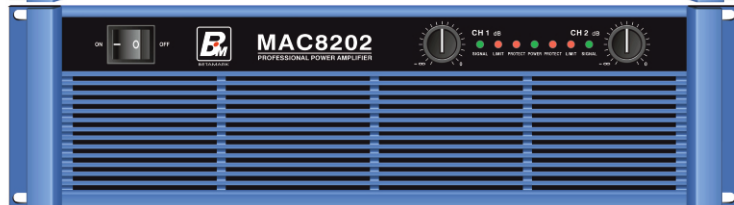
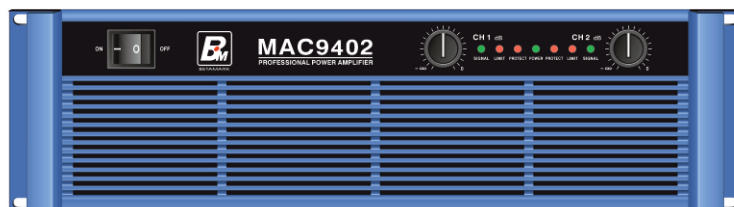
**4 x Fans High Speed**



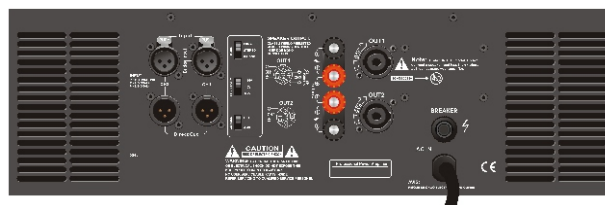
- > High Efficiency Class H Power Modules
- > Latest Innovation in 4 Channel Circuit.
- > Four Fans for Stable Operations in High Temperature.
- > Overheat Protection, Short Circuit Protect, DC Protect.
- > Sensitivity & Mode Selector- BRIDGE, MONO, STEREO.
- > Input Sensitivity - 0.775v / 1v / 32 dB Switchable
- > Automatic Temperature Control and Limiter Control
- > Best for LINE ARRAYS (10" & 12") and Top (12" & 15").
- > Suitable for LIVE Reinforcement, DJ & Installations

### MAC Series

- > High Efficiency Class H Power Modules
- > Stable at 2 ohms
- > Advanced Copper Toroidal Transformer
- > Input Peak Limiter, Low Distortion and Overheating Protection
- > Stereo/Bridge/Parallel/Crossover Modes
- > Suitable for LIVE Reinforcement System, DJ & Installations



MODEL NO.	MAC 9402	MAC 9202	MAC 8202	MAC 7202
2Ω STEREO	3700 X 2	3250 X 2	2500 X 2	2000 X 2
4Ω STEREO	2500 X 2	2250 X 2	1700 X 2	1400 X 2
8Ω STEREO	1800 X 2	1550 X 2	1100 X 2	900 X 2
4Ω BRIDGE	7400w	6500w	5000w	4000w
8Ω BRIDGE	5000w	4500w	3400w	2800w
DAMPING FACTOR	>800	>800	>700	>500
CLASS	H	H	H	H
WEIGHT (KG)	36	36	33	27





**BETAMARK**  
PROFESSIONAL AUDIO

ACTIVE SPEAKERS

POWERED LOUDSPEAKER

# AM-15 DSP

2000-Watt 15-Inch 2-Way Powered Loudspeaker  
With DSP & Bluetooth

## ACTIVE SPEAKER

WITH HIGH POWER SOUND

## CLASS D AMPLIFICATION

FOR CLEAR HIGHS AND PUNCHIER BASS

## FLEXIBLE I/O

WITH TRS JACK- MIC/LINE, RC & AUX

## DIGITAL DSP

WITH ONE PUSH EASY CONTROLS

## BT 2.0 CONNECT

FOR WIRELESS AUDIO STREAMING

## MULTIPLE USES

AS FREESTANDING, STAGE MONITOR & MORE.



### SOUND PROGRAMS

- MUSIC
- LIVE
- VOICE
- DJ

### 3-BAND EQ

- HI EQ ( $\pm 12$ dB)
- MID EQ ( $\pm 12$ dB)
- LOW EQ ( $\pm 12$ dB)



**XLR LINK OUTPUT**

Speaker type	15" 2-way, Bi-amp powered speaker, Bass-reflex type1		
Frequency range (-10dB)	46Hz - 20kHz		
Nominal coverage	H	90°	
	V	60°	
Components	LF	15"-Woofers	
	HF	1" Throat Driver	
Crossover	2.5KHz		
Output power	RMS: 600W / PROGRAM POWER: 1200W /		
Maximum output level	136dB SPL		
I/O connectors	INPUT 1 & 2: 3.5mm Jack/ XLR/ 6.35mm TRS combo with BT		
Processors	DIGITAL DSP		
Power requirements	100V - 240V, 50Hz/60Hz		
Power consumption	110W		
Flying & mounting	Top x2, Rear x1 (Fits for M10 x 18mm eyebolts)		
Pole socket	35mm with 2-way features (0 or 7 degrees)		
Dimensions	W- 445mm	H- 700mm	D- 380mm
Net weight	22.5kg		
Cabinet Material	ABS (Matte Finish, Black)		





The PD21-3500C is an extremely low distortion and highly dynamic loudspeaker. The speaker comes with 6" vented Inside/Outside Voice Coil to reduce power compression effects, The speaker is build with vented cast aluminium chasis for improved thermal control. Suitable for hybrid horn loaded cabinet designs, the unit produces 95.5 dB sensitivity over its working band and is capable of handling 3500w AES power.

Featuring a Double ceramic magnetic assembly generating very high force factor with Chrome plated top for style as well.. The design also incorporates a Double silicon spider suspension system and Carbon cone paper that provides exceptional stability and control with extended bass response.

### PD21 3500 C

Power Rating	3500w AES
Voice Coil	6" (152mm) <b>IN/OUT</b>
Sensitivity	96 ± 2dB
Freq. Response	28-1000Hz
Nominal Imp./ DC resis.	8Ω/ 5.2Ω
Magnet Size	330x170x25 (2pcs) <b>DOUBLE MAGNET</b>

**DOUBLE**

**VOICE COIL**  
PUNCHIER SOUND

**MAGNET**  
MORE POWER

**SPIDER**  
EXTRA SUSPENSION



CHROME  
PLATED



**Recommended Amplifier : MT12000**



## **PD18 3000 C**

Power Rating	3000w AES
Voice Coil	5" (125mm) <b>IN/OUT</b>
Sensitivity	96 ± 2dB
Freq. Response	30-1000Hz
Nominal Imp./ DC resis.	8Ω/ 5.2Ω
Magnet Size	280x150x25 (2pcs) <b>DOUBLE MAGNET</b>

Recommended Amplifier : MT10000/ MT7000



## **PD18 3000 v3**

Power Rating	3000w AES
Voice Coil	5" (125mm) <b>IN/OUT</b>
Sensitivity	96 ± 2dB
Freq. Response	30-1000Hz
Nominal Imp./ DC resis.	8Ω/ 5.2Ω
Magnet Size	280x150x25 (2pcs) <b>DOUBLE MAGNET</b>

Recommended Amplifier : MT10000/ MT7000



## **PD 1882 v3**

Power Rating	2000w AES
Voice Coil	5" (125mm) <b>IN/OUT</b>
Sensitivity	96 ± 2dB
Freq. Response	35-1500Hz
Nominal Imp./ DC resis.	8Ω/ 5.2Ω
Magnet Size	280x140x25

Recommended Amplifier: MT7000/ PA6.0



## **18 SW 1270**

Power Rating	2000w AES
Voice Coil	5" (125mm) <b>IN/OUT</b>
Sensitivity	96 ± 2dB
Freq. Response	31-1200Hz
Nominal Imp./ DC resis.	8Ω/ 5.2Ω
Magnet Size	250x140x25





## **18 F 451 v3**

Power Rating	1500w AES
Voice Coil	4.5" (114mm) <b>IN/OUT</b>
Sensitivity	97 ± 2dB
Freq. Response	40-1800Hz
Nominal Imp./ DC resis.	8Ω/ 6.2Ω
Magnet Size	254x127x30

Recommended Amplifier: MT6000/ PA6.0



## **18 TLW 3000**

Power Rating	1500w AES
Voice Coil	4" <b>TETRA Double IN/OUT</b>
Sensitivity	95 ± 2dB
Freq. Response	30-1500Hz
Nominal Imp./ DC resis.	8Ω/ 5.5Ω
Magnet Size	220x110x20



## **C18 650EL**

Power Rating	1200w AES
Voice Coil	4" (99.5 mm)
Sensitivity	95 ± 2dB
Freq. Response	40-2000Hz
Nominal Imp./ DC resis.	8Ω/ 5.6Ω
Magnet Size	220x110x25



## **P180 2242**

Power Rating	1000w AES
Voice Coil	4" (99.5mm)
Sensitivity	95 ± 2dB
Freq. Response	30-1500Hz
Nominal Imp./ DC resis.	8Ω/ 5.5Ω
Magnet Size	220x110x25





## 15 TBX 1000 v3

Power Rating	1000w AES
Voice Coil	4" (99.5mm) <b>IN/OUT</b>
Sensitivity	96 ± 2dB
Freq. Response	45-2500Hz
Nominal Imp./ DC resis.	8Ω/ 5.8Ω
Magnet Size	220x110x25



## PD 1552 C

Power Rating	1200w AES
Voice Coil	4" (99.5mm) <b>IN/OUT</b>
Sensitivity	96 ± 2dB
Freq. Response	40-2500Hz
Nominal Imp./ DC resis.	8Ω/ 5.8Ω
Magnet Size	220x110x25



## CF 15N 401 **NEO**

Power Rating	1200w AES
Voice Coil	4" (99.5mm)
Sensitivity	96 ± 2dB
Freq. Response	45-3500Hz
Nominal Imp./ DC resis.	8Ω/ 5.3Ω
Magnet Size	<b>NEODYMIUM</b>



## P150 2228

Power Rating	1000w AES
Voice Coil	4" (99.5mm)
Sensitivity	95 ± 2dB
Freq. Response	40-2000Hz
Nominal Imp./ DC resis.	8Ω/ 5.3Ω
Magnet Size	220x110x20





### BL 1501 v2

Power Rating	800w AES
Voice Coil	4" (99.5mm)
Sensitivity	95 ± 2dB
Freq. Response	40-2000Hz
Nominal Imp./ DC resis.	8Ω/ 5.8Ω
Magnet Size	220x110x20



### 15 BM 600

Power Rating	600w AES
Voice Coil	3.5" (87mm)
Sensitivity	97 ± 2dB
Freq. Response	45-3500Hz
Nominal Imp./ DC resis.	8Ω/ 5.2Ω
Magnet Size	200x110x25



### 15 BM 500

Power Rating	500w AES
Voice Coil	3.25" (82.5mm)
Sensitivity	97 ± 2dB
Freq. Response	40-3500Hz
Nominal Imp./ DC resis.	8Ω/ 5.3Ω
Magnet Size	200x100x20



### 15 400 MB

Power Rating	400w AES
Voice Coil	3" (75.5mm) <b>IN/OUT</b>
Sensitivity	95 ± 2dB
Freq. Response	45-3500Hz
Nominal Imp./ DC resis.	8Ω/ 5.6Ω
Magnet Size	190x90x20



### 15 BM 300

Power Rating	300w AES
Voice Coil	3" (75.5mm)
Sensitivity	96 ± 2dB
Freq. Response	40-3000Hz
Nominal Imp./ DC resis.	8Ω/ 5.6Ω
Magnet Size	190x90x20



## **12 NDL 100** **NEO**

Power Rating	1200w AES
Voice Coil	4" (99.5mm)
Sensitivity	95 ± 2dB
Freq. Response	55-3500Hz
Nominal Imp./ DC resis.	8Ω/ 5.8Ω
Magnet Size	NEODYNIUM



## **BL 2262N** **NEO**

Power Rating	800w AES
Voice Coil	3" (75.5mm)
Sensitivity	99 ± 2dB
Freq. Response	50-4000Hz
Nominal Imp./ DC resis.	8Ω/ 5.3Ω
Magnet Size	NEODYNIUM



## **12 NDL 76 v3** **NEO**

Power Rating	800w AES
Voice Coil	3" (75.5mm) <b>IN/OUT</b>
Sensitivity	95 ± 2dB
Freq. Response	50-3500Hz
Nominal Imp./ DC resis.	8Ω/ 5.8Ω
Magnet Size	NEODYNIUM



## **BL 12800**

Power Rating	800w AES
Voice Coil	4" (99.5mm)
Sensitivity	95 ± 2dB
Freq. Response	55-3500Hz
Nominal Imp./ DC resis.	8Ω/ 5.8Ω
Magnet Size	220x110x20



## **12 AZ 500 v3**

Power Rating	500w AES
Voice Coil	3.5" (87.5mm) <b>IN/OUT</b>
Sensitivity	96 ± 2dB
Freq. Response	60-3500Hz
Nominal Imp./ DC resis.	8Ω/ 5.6Ω
Magnet Size	190x90x25